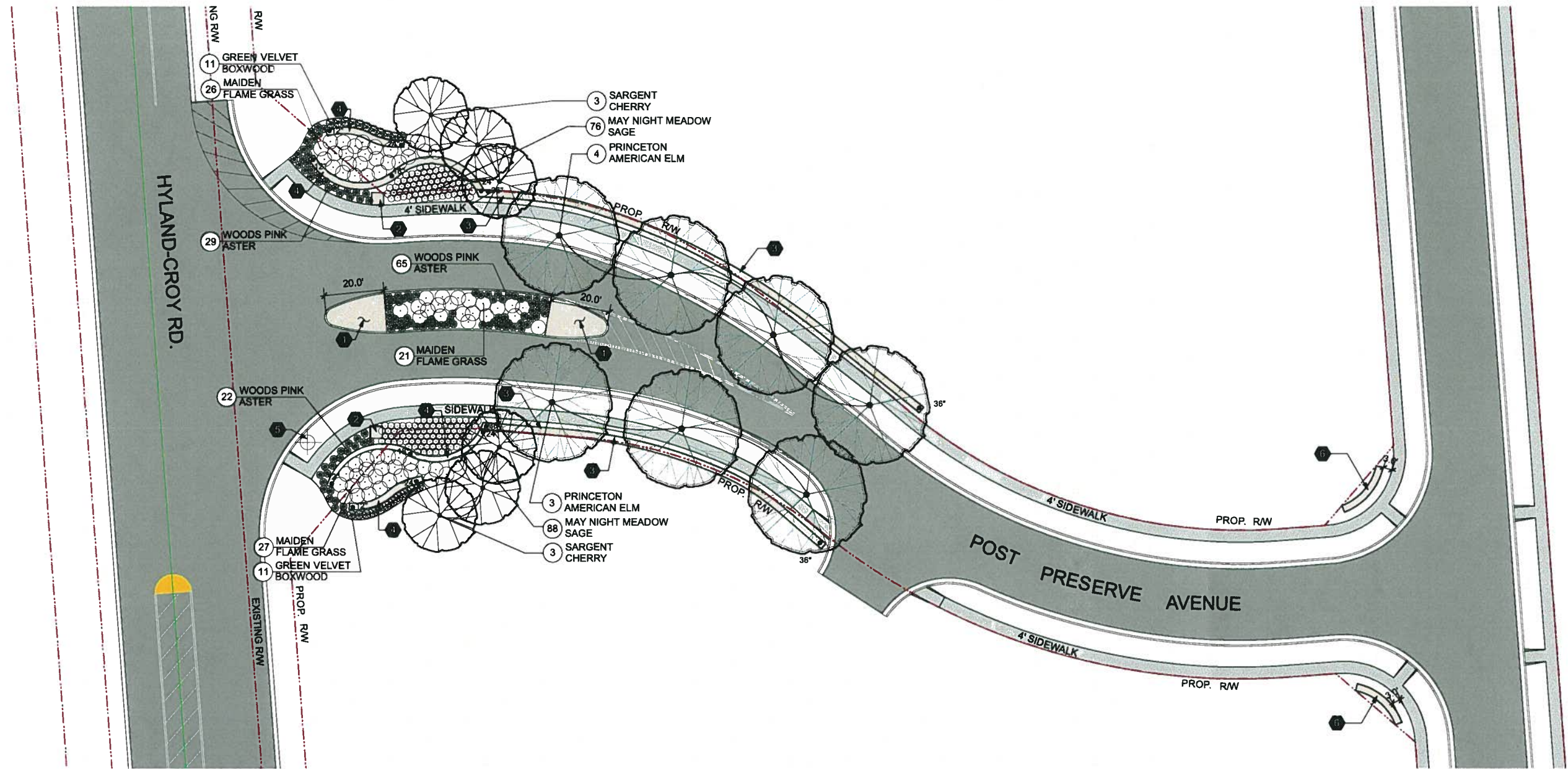


CITY OF DUBLIN  
 POST PRESERVE AVENUE/  
 HYLAND-CROY INTERSECTION

**BURGESS & NIPLE, INC.**



**GENERAL SUMMARY**

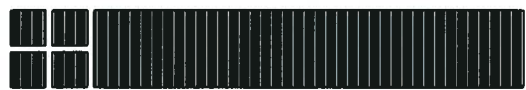
QNTY.	COMMON NAME	BOTANICAL NAME	SIZE	ROOT
<b>DECIDUOUS TREES</b>				
	PRINCETON AMERICAN ELM	ULMUS AMERICANA 'PRINCETON'	2.5" CAL.	B&B
<b>ORNAMENTAL TREES</b>				
	SARGENT CHERRY	PRUNUS SARGENTII	2.0" CAL.	B&B
<b>EVERGREEN SHRUB</b>				
	GREEN VELVET BOXWOOD	BUXUS X 'GREEN VELVET'	18" HT.	B&B
<b>ORNAMENTAL GRASSES / PERENNIALS</b>				
	MAIDEN FLAME GRASS	MISCANTHIS SINENSIS VAR. PURPURASCENS	5 GAL.	CONT.
	WOODS PINK ASTER	ASTER DUMOSUS 'WOODS PINK'	2 GAL.	CONT.
	MAY NIGHT MEADOW SAGE	SALVIA NEMOROSA 'MAY NIGHT'	2 GAL.	CONT.
<b>LANDSCAPE MISC.</b>				
	PRE-MIXED PLANTING MIXTURE FOR FLOWER BEDS @ 8" DEPTH			
	BARK MULCH (FLOWER / PLANT BEDS)			
	SEED			

**KEYNOTES: LANDSCAPE**

1. UNILOCK COURTSTONE PAVERS.
2. DRY-LAID STONE PIER WITH PLAQUE SIGN ON WEST FACE.
3. DRY-LAID STONE WALL STARTING AT 12" IN HT. INCREASING TO 24" AS SHOWN.
4. 36" HT. DRY-LAID STONE WALL WITH BOOKENDS.
5. LIGHT POLE.
6. 24" HT. DRY-LAID STONE WALL WITHOUT BOOKENDS.

BN-FRM.DWG 10-27-99

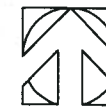
NO.	REVISIONS	DATE	BY	CHK.



**BURGESS & NIPLE**

CITY OF DUBLIN, OHIO  
POST PRESERVE ACCESS MODIFICATION

JOB NO. :	PR47045
DESIGNED BY :	AAC
DRAWN BY :	AAC
CHECKED BY :	JIB
APPROVED BY :	
DATE :	MARCH 2009



**LANDSCAPE PLAN**

LANDSCAPE SHEET:	L-1	SCALE:	1"=20'
SHEET NO.	X	OF	X

