

live  
learn  
work  
create **in**  
**DUBLIN**

live  
learn  
work  
create **in**  
**DUBLIN**

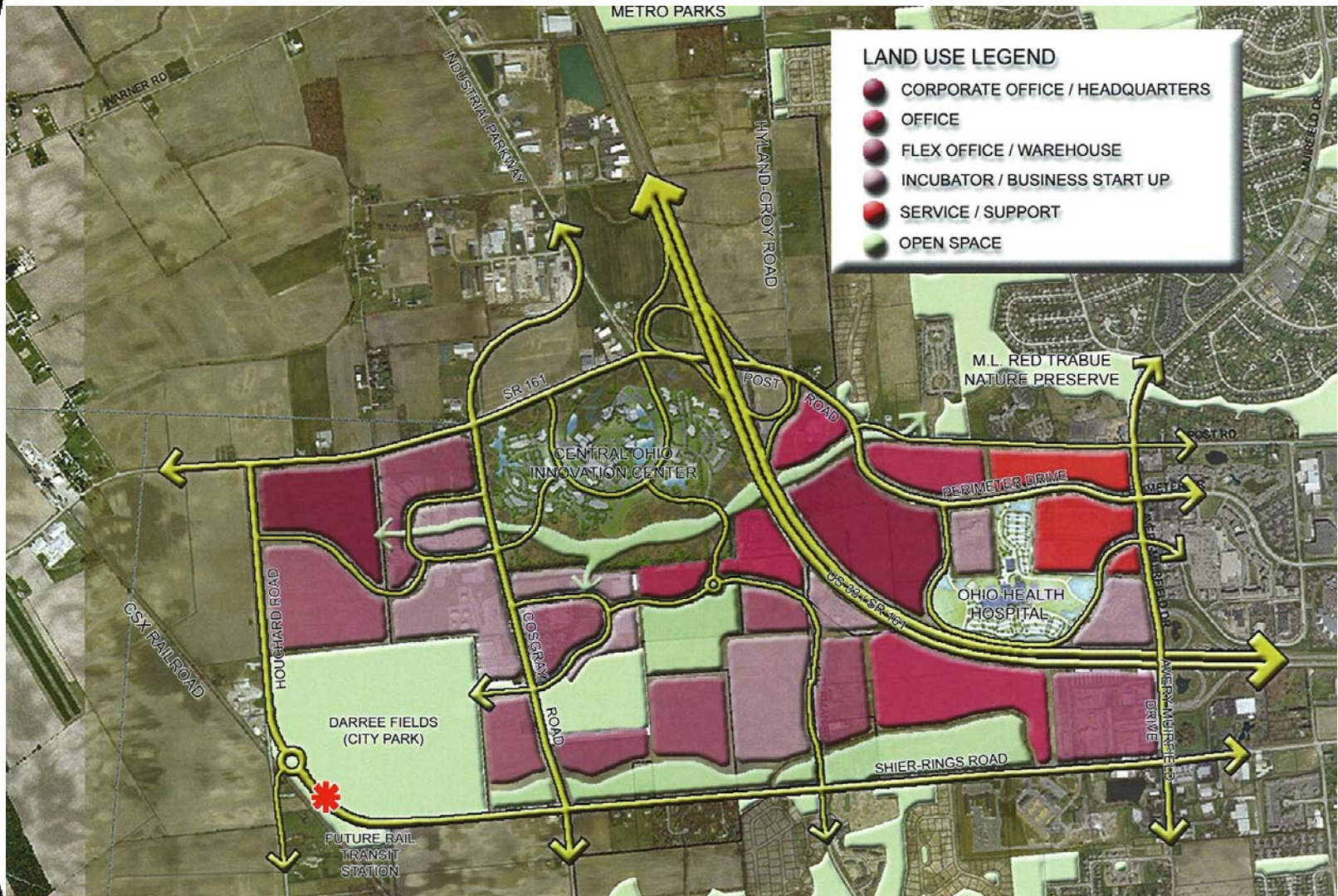


# Agenda

- Welcome & Introductions
- Overview of Central Ohio Innovation Center and US 33/SR 161/Post Road Interchange Modifications
- Concerns & Responses
- Questions & Answers

## Central Ohio Innovation Center

- 1500 Acre area to include:
  - Dublin Methodist Hospital
  - UMC Development: James Care Center, Particle Therapy Center, outpatient services, imaging
  - Erickson – Senior Living Center
  - Future Research and Technology projects



## US 33/SR 161/Post Road Interchange

- Modifications to interchange is needed with or without development in Dublin to accommodate projected traffic growth in the area
- City of Dublin is partnering with ODOT to coordinate planning, design and construction
- Interchange modifications are scheduled to be completed third quarter of 2008



## Concerns & Responses

- Modification to Post Preserve Blvd. at Post Rd.
  - Worse case – access point will be removed completely
  - Best case – a right-in/right-out restriction will be installed
  - The proposed schedule for making this modification has yet to be determined.
- Cut-through traffic and speeding on Post Preserve Blvd.
  - Engineering will work with the Traffic Enforcement Unit of the Division of Police to assess this situation and encourage compliance the posted speed limit

## Concerns & Responses

- Why was the extension of Stillhouse Lane shown as the connection to Hyland-Croy Rd.?
  - This road was planned to be extended westward when Post Preserve was laid out. This connection will be north of the needed improvements at Hyland-Croy and Post Roads and utilizes the existing traffic circle as a traffic calming measure.
- What will intersection control be for the new intersection on Hyland-Croy Rd.? With the already high volumes, left turns will be difficult.
  - We anticipate that it will be a stop sign controlled intersection until appropriate warrants are met for another type of control to be installed (i.e. signal or roundabout).

# Questions?

Contact the Director of Engineering via the City of Dublin website to submit comments or questions on this project.

[www.dublin.oh.us](http://www.dublin.oh.us)