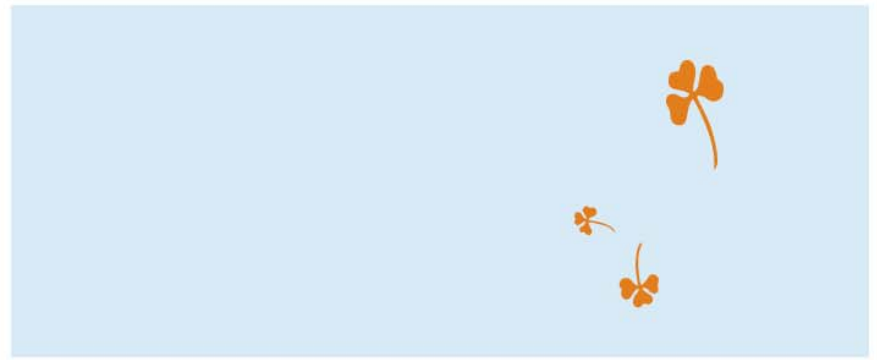


Avery Road Area Plan



Planning Challenges and Issues

- Create a unified streetscape
- Establish clear gateways
- Sensitively consider historic resources
- Integrate civic and neighborhood service uses
- Provide greater connectivity
- Use roads to define pedestrian and public space
- Emphasize traffic and access management



Design Recommendations

Avery Road Area Recommendations:

- | | |
|--|--|
| 1 Future interchange improvements per I-270 Major Investment Study | 10 Pedestrian connection to tunnel for access to residences east of Avery Road |
| 2 Targeted redevelopment area as part of the Central Ohio Innovation Center | 11 100-foot setback to provide green view/corridor into park area |
| 3 Preservation of existing woodland as character element | 12 Utilization of pedestrian spaces, patios and plazas |
| 4 Future roundabout at Shier Rings Road and potential location for public art | 13 Pedestrian core to provide greenway linkages to pool and businesses |
| 5 65-foot setback along Avery Road for nonresidential architecture | 14 Integration of private uses into civic/park areas |
| 6 Added road connectivity for area businesses | 15 Shared public/private parking to maximize efficiency and year-round use |
| 7 Adjustment of road alignment to preserve historic cemetery | 16 Potential future park areas as properties become available |
| 8 Roundabout at Tuswell Drive and potential location for public art | 17 Additional areas for park programming |
| 9 Future roundabout at Woerner Temple Road and potential location for public art | 18 Utilization of screened alley system to visually improve streetscape |
| | 19 Creation of pedestrian-oriented streetscapes with on-street parking |



Planning Goals

...To establish a cohesive corridor appearance in this transitional redevelopment area through road design, landscape architecture and architectural/site layout principles in a manner that accommodates a mix of land uses with greater pedestrian connectivity and integration with surrounding neighborhoods.