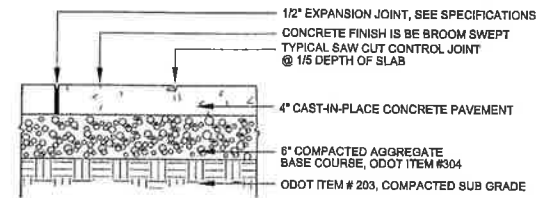




- NOTES:**
- 9 VILLAGE GREEN BENCHES, 3 SCARBOROUGH TRASH RECEPTACLES AND 8 MANISTEE PICNIC TABLES ARE TO BE INSTALLED AT DALMORE PARK.
  - THE ARMLESS BENCHES, TRASH RECEPTACLES AND PICNIC TABLES ARE MANUFACTURED BY LANDSCAPE FORMS AND DISTRIBUTED BY SHARON SNOW 614-791-9625.
  - ALL FURNITURE TO BE PURCHASED BY THE CITY OF DUBLIN AND INSTALLED BY THE CONTRACTOR. THE CONTRACTOR IS RESPONSIBLE FOR MOVING THE FURNITURE FROM THE SERVICE CENTER TO THE PROJECT SITE.
  - THE VILLAGE BENCH SHALL BE 70", ARMLESS, SURFACE MOUNT AND POWER COATED BLACK.
  - THE SCARBOROUGH TRASH RECEPTACLES SHALL BE TOP-OPENING, VERTICAL STRAP, POWDER COATED BLACK, AND HAVE A BLACK LINER. ONE RECEPTACLE SHALL BE IN THE SHELTER, ONE ADJACENT TO THE PLAYGROUND AND ONE BY THE BIKE RACK.
  - THE SIX-PERSON MANISTEE PICNIC TABLES SHALL BE POWDER COATED BLACK AND BE SURFACE MOUNTED.

**1 SITE FURNITURE**

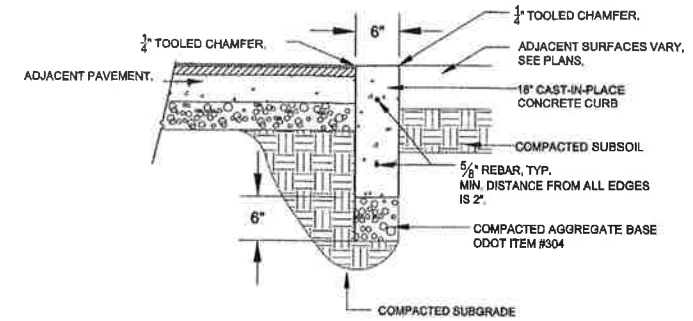
SCALE: NOT TO SCALE



- NOTES:**
- EXPANSION JOINTS TO BE 30'-0" O.C.
  - CONTROL JOINTS TO BE 5'-0" O.C. OR AS SHOWN ON PLAN

**2 CONCRETE PAVEMENT**

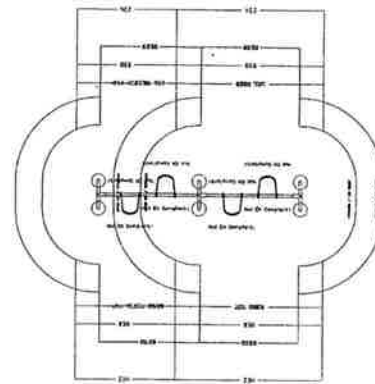
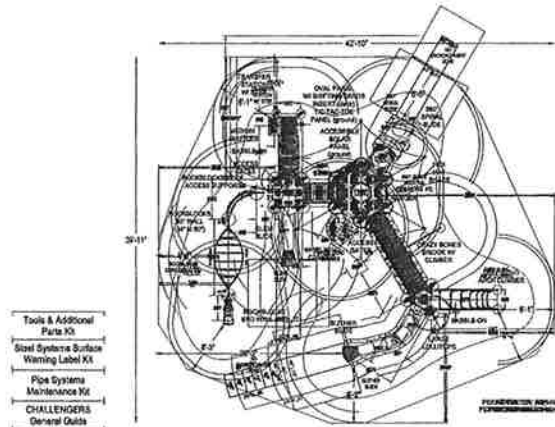
SCALE: 1"=1'-0"



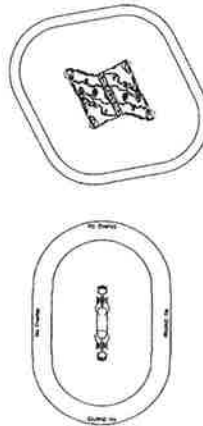
- NOTES:**
- EXPANSION JOINTS TO BE 20'-0" O.C.
  - SAW CUT, CONTROL JOINTS TO BE 5'-0" O.C. OR AS SHOWN ON THE PLAN.
  - PROVIDE LIGHT BROOM FINISH ON ALL CONCRETE SURFACES AFTER JOINT & EDGE TOOLING.

**3 CONCRETE CURB**

SCALE: 1"=1'-0"

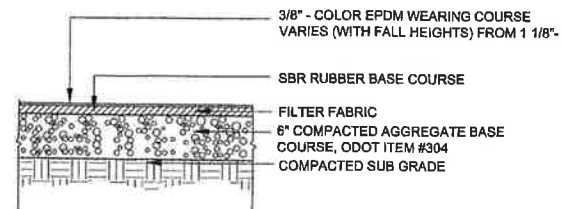


- PLAYGROUND NOTES:**
- CUSTOM DESIGNED DALMORE PLAYGROUND IS MANUFACTURED BY PLAYWORLD AND DISTRIBUTED BY PLAYWORLD MID-STATES, 888-462-7661.
  - PLAYGROUND EQUIPMENT TO BE PURCHASED BY THE CITY OF DUBLIN AND INSTALLED BY CONTRACTOR. CONTRACTOR RESPONSIBLE FOR MOVING THE EQUIPMENT FROM THE SERVICE CENTER TO THE PROJECT SITE.
  - INSTALL STRUCTURE IN ACCORDANCE WITH MANUFACTURER'S SPECIFICATIONS.
  - CONTRACTOR TO INSTALL PROTECTIVE SURFACING WITHIN THE USE ZONE OF ALL PLAY EQUIPMENT TO COMPLY WITH ASTM F1292. EQUIPMENT USE ZONES SHALL COMPLY WITH ASTM F1487.
  - GROUND PLAN FOR OVERALL REFERENCE ONLY. REFER TO MANUFACTURER'S SPECIFICATIONS FOR MORE DETAIL.
  - PLAYGROUND COLORS ARE AS FOLLOWS: ALL METAL : BROWN, ALL PLASTIC : BEIGE, ALL DECKING: BROWN, AND NETTING: RED.



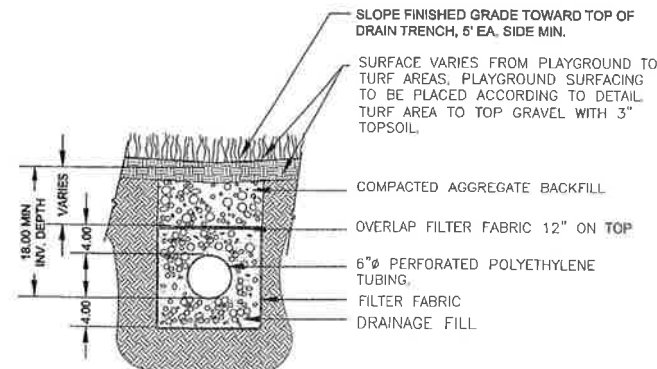
**4 PLAYGROUND**

SCALE: NOT TO SCALE



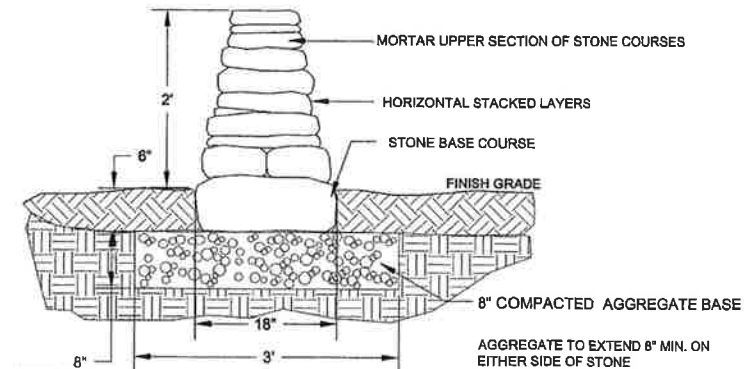
**5 RESILIENT RUBBER SURFACE**

SCALE: 1"= 1'



**6 UNDERDRAIN**

SCALE: 1"=1'-0"



- NOTES:**
- BATTER WALL 2" PER VERTICAL FOOT.
  - MAINTAIN LEVEL COURSES. SHIM WITH EARTH AND STONE CHIPS TO PROVIDE STABLE COURSING.
  - MORTAR MIDDLE SECTION OF COURSES FOR WALLS EXCEEDING 2'-0".
  - STONE MATERIAL TO MATCH BALLANTAE WALLS, AS APPROVED BY THE DIRECTOR OF PARKS AND OPEN SPACE.

**7 LIMESTONE WALL**

SCALE: 1"= 1'-0"

**2 WORKING DAYS BEFORE YOU DIG**  
 CALL TOLL FREE 800-362-2764  
 OHIO UTILITIES PROTECTION SERVICE

**DALMORE PARK Development Project**

**DRAWN BY:**  
 Laura P. Karagory  
 Ohio RLA # 1048

**DATE:**  
 June 2009