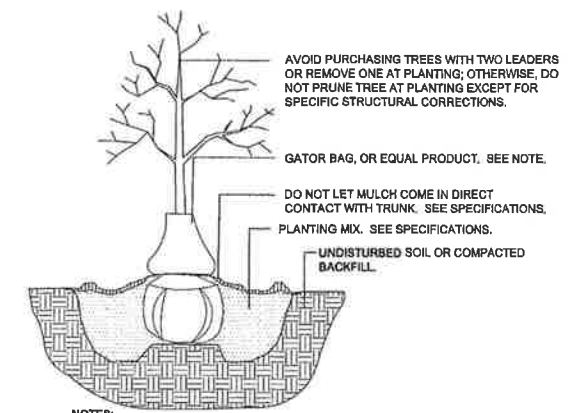
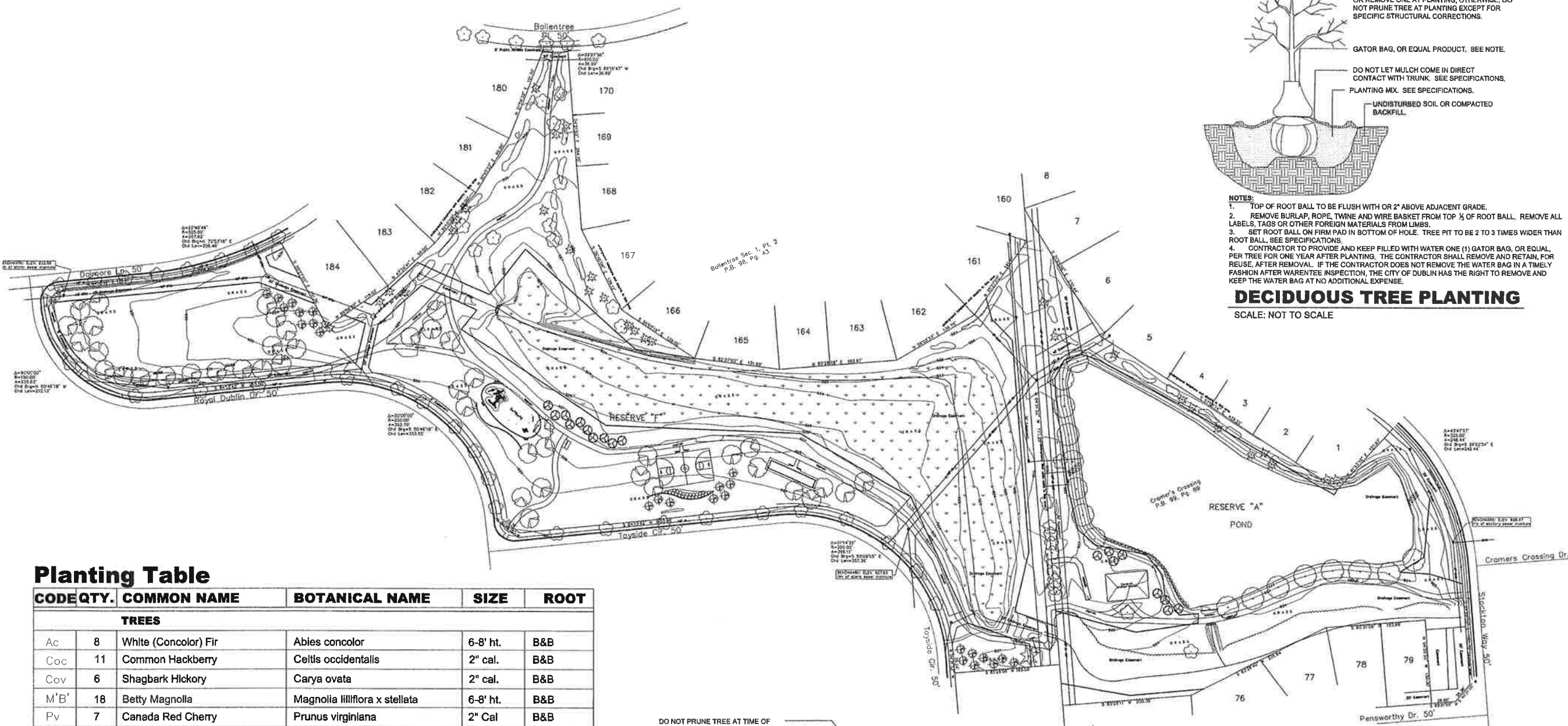


- NOTES:**
- SEE DETAILS, THIS PAGE, FOR TREE AND SHRUB INSTALLATION REQUIREMENTS.
  - NATIVE GRASSES AND FORBES MUST BE PURCHASED FROM AN APPROVED SOURCE. SOURCES INCLUDE BUT ARE NOT LIMITED TO J.F. NEW AND ENVIROTECH. OTHER SOURCES MUST BE APPROVED PRIOR TO PURCHASE. THE CONTRACTOR IS RESPONSIBLE FOR SUBMITTING SEED LABELS AND FORBE PACKING RECEIPTS WITH QUANTITIES AND SPECIES SHIPPED VERIFIED BY THE SUPPLIER.
  - POND EDGE PLANT MATERIAL LAYOUT TO BE COORDINATED WITH THE LANDSCAPE ARCHITECT. CONTRACTOR RESPONSIBLE FOR INSTALLING 400' OF FENCING TO DETER GEESSE THE LENGTH THE FORBE PLANTING.
  - WET MEADOW EXECUTION:
    - CONTRACTOR IS RESPONSIBLE FOR DELINEATING THE 122,948 SQ. FT. WET MEADOW AREA
    - APPLYING TWO ROUNDS OF GLYPHOSATE, SEPARATED BY A TWO TO THREE WEEK PERIOD.
    - SLICE SEEDING A J.F. NEW BASIC PRAIRIE OR SIMILAR ENVIROTECH SEED MIX (BASIS FOR DESIGN) IN TWO DIRECTIONS AND AS DIRECTED BY SEED SUPPLIER.
    - FORBE LAYOUT IS TO BE PERFORMED IN THE FIELD WITH THE LANDSCAPE ARCHITECT. FORBES ARE A FALL INSTALLATION BETWEEN SEPT. 15 AND NOVEMBER 1.

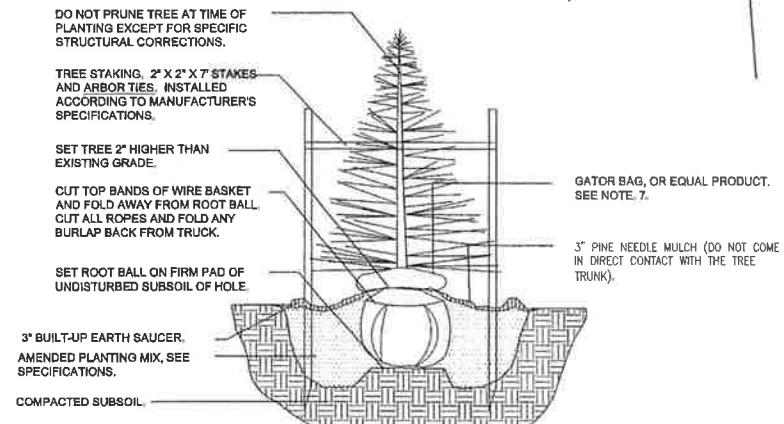


- NOTES:**
- TOP OF ROOT BALL TO BE FLUSH WITH OR 2" ABOVE ADJACENT GRADE.
  - REMOVE BURLAP, ROPE, TWINE AND WIRE BASKET FROM TOP 1/3 OF ROOT BALL. REMOVE ALL LABELS, TAGS OR OTHER FOREIGN MATERIALS FROM LIMBS.
  - SET ROOT BALL ON FIRM PAD IN BOTTOM OF HOLE. TREE PIT TO BE 2 TO 3 TIMES WIDER THAN ROOT BALL, SEE SPECIFICATIONS.
  - CONTRACTOR TO PROVIDE AND KEEP FILLED WITH WATER ONE (1) GATOR BAG, OR EQUAL, PER TREE FOR ONE YEAR AFTER PLANTING. THE CONTRACTOR SHALL REMOVE AND RETAIN, FOR REUSE, AFTER REMOVAL. IF THE CONTRACTOR DOES NOT REMOVE THE WATER BAG IN A TIMELY FASHION AFTER WARENTEE INSPECTION, THE CITY OF DUBLIN HAS THE RIGHT TO REMOVE AND KEEP THE WATER BAG AT NO ADDITIONAL EXPENSE.
- DECIDUOUS TREE PLANTING**  
SCALE: NOT TO SCALE

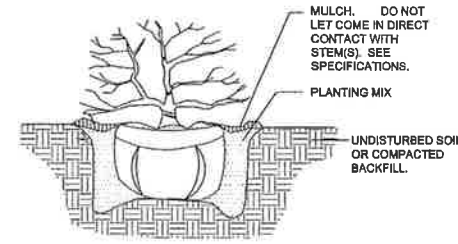


**Planting Table**

CODE	QTY.	COMMON NAME	BOTANICAL NAME	SIZE	ROOT
<b>TREES</b>					
Ac	8	White (Concolor) Fir	Abies concolor	6-8' ht.	B&B
Coc	11	Common Hackberry	Celtis occidentalis	2" cal.	B&B
Cov	6	Shagbark Hickory	Carya ovata	2" cal.	B&B
M'B'	18	Betty Magnolia	Magnolia lilliflora x stellata	6-8' ht.	B&B
Pv	7	Canada Red Cherry	Prunus virginiana	2" Cal	B&B
Qo	20	White Oak	Quercus alba	2" cal.	B&B
Sb	16	Weeping Willows	Salix babylonica	2" cal.	B&B
Td	17	Bald Cypress	Taxodium distichum	2" cal.	B&B
<b>SHRUBS</b>					
Cs	30	Redosier Dogwood 'Cardinal'	Cornus sericea	5 gal.	Cont.
Mp	24	Northern Bayberry	Myrica pensylvanica	5 gal.	Cont.
<b>WET MEADOW FORBES</b>					
50		Swamp Milkweed	Asclepias incarnata	3"	plug
50		Purple Coneflower	Echinacea purpurea	3"	plug
50		Joe Pye Weed	Eupatorium maculatum	3"	plug
50		March Hibiscus	Hibiscus moscheuto	3"	plug
50		Cardinal Flower	Lobelia cardinalis	3"	plug
50		Compass Plant	Silphium laciculata	3"	plug
50		Compass Plant	Silphium laciculata	3"	plug
<b>POND EDGE FORBES</b>					
35		Sweet Flag	Acorus americanus	3"	plug
35		Northern Blue Flag	Iris vericolor	3"	plug
35		Cardinal Flower	Lobelia cardinalis	3"	plug
35		Arrow Arum	Peltandra virginica	3"	plug
35		Pickeral Weed	Pontederia cordata	3"	plug



- NOTES:**
- TOP OF ROOT BALL TO BE FLUSH WITH OR 2" ABOVE ADJACENT GRADE.
  - REMOVE BURLAP, ROPE, TWINE AND WIRE BASKET FROM TOP 1/3 OF ROOT BALL. REMOVE ALL LABELS, TAGS OR OTHER FOREIGN MATERIALS FROM LIMBS.
  - SET ROOT BALL ON FIRM PAD IN BOTTOM OF HOLE. TREE PIT TO BE 2 TO 3 TIMES WIDER THAN ROOT BALL, SEE SPECIFICATIONS.
  - FOR CONTAINER GROWN TREES, USE FINGERS OF SMALL HAND TOOLS TO PULL APART OR LOOSEN ANY CIRCLING ROOTS.
  - THOROUGHLY SOAK THE TREE ROOT BALL AND ADJACENT PREPARED SOIL SEVERAL TIMES DURING THE FIRST MONTH AFTER PLANTING.
  - ARBOR TIES MANUFACTURED BY DEEP ROOT PARTNERS, L.P., PHONE # 800-458-7668. COLOR TO BE OLIVE GREEN.
  - CONTRACTOR TO PROVIDE AND KEEP FILLED WITH WATER ONE (1) GATOR BAG, OR EQUAL, PER TREE FOR ONE YEAR AFTER PLANTING. THE CONTRACTOR SHALL REMOVE AND RETAIN, FOR REUSE, AFTER REMOVAL. IF THE CONTRACTOR DOES NOT REMOVE THE WATER BAG IN A TIMELY FASHION AFTER WARENTEE INSPECTION, THE CITY OF DUBLIN HAS THE RIGHT TO REMOVE AND KEEP THE WATER BAG AT NO ADDITIONAL EXPENSE.
- EVERGREEN TREE PLANTING**  
SCALE: NOT TO SCALE

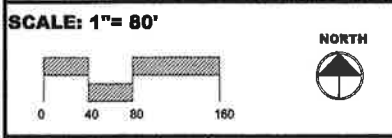


- NOTES:**
- TOP OF ROOT BALL TO BE 2"-4" ABOVE ADJACENT GRADE.
  - REMOVE BURLAP, ROPE AND TWINE FROM TOP 1/3 OF ROOT BALL
  - CUT TOP 1/3 OF WIRE BASKET FROM ROOT BALL. REMOVE ALL LABELS, TAGS OR OTHER FOREIGN MATERIALS FROM LIMBS.
  - SET ROOT BALL ON FIRM PAD IN BOTTOM OF HOLE. SHRUB PIT TO BE 2-3 TIMES WIDER THAN ROOT BALL. SEE SPECIFICATIONS.
- SHRUB PLANTING**  
SCALE: NOT TO SCALE

**2 WORKING DAYS  
BEFORE YOU DIG**

CALL TOLL FREE 800-362-2764  
OHIO UTILITIES PROTECTION SERVICE

**DALMORE PARK  
Development Project**



**DRAWN BY:** Laura P. Karagory  
Ohio RLA # 1046

**DATE:** June 2009

**PLANTING PLAN L-3**