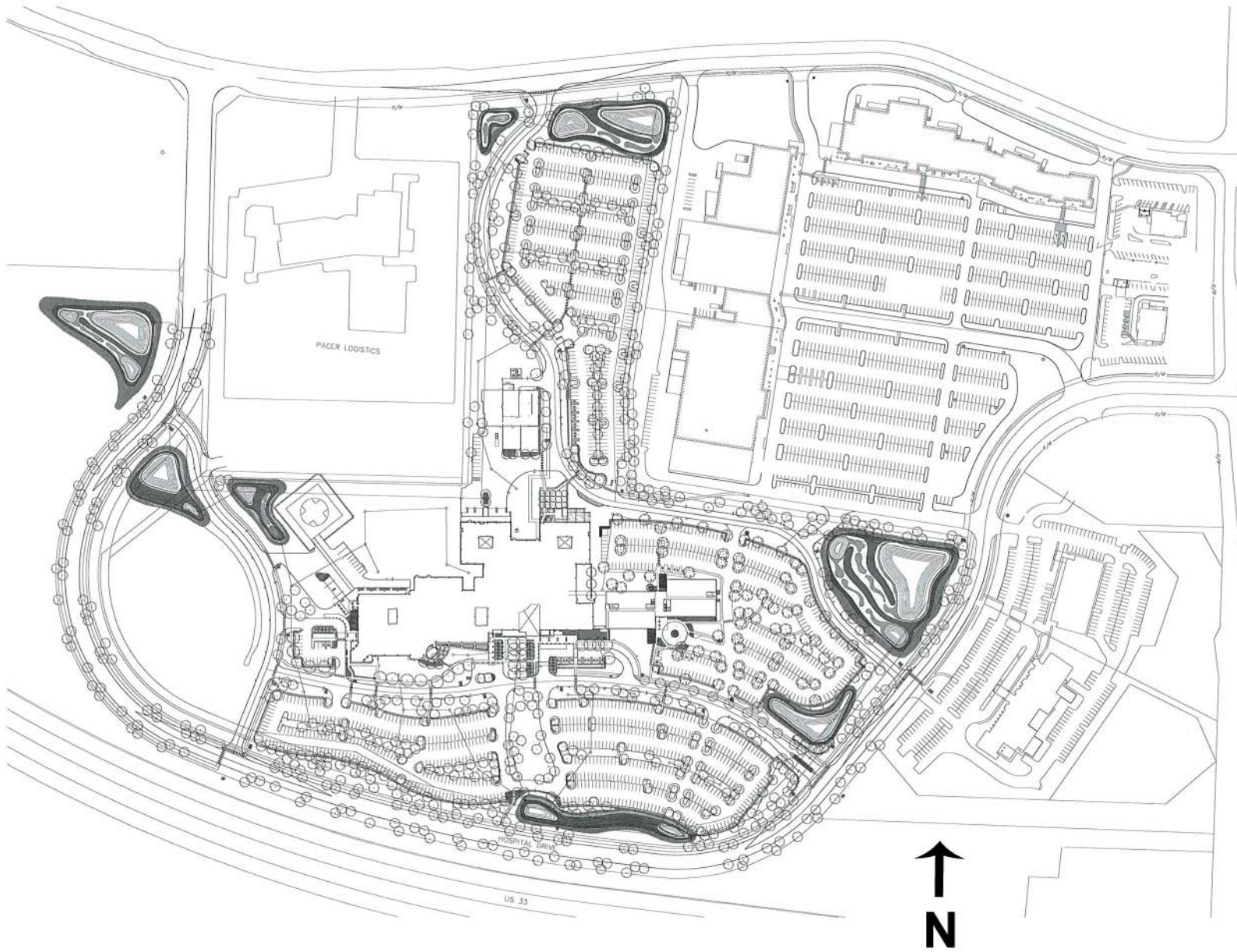
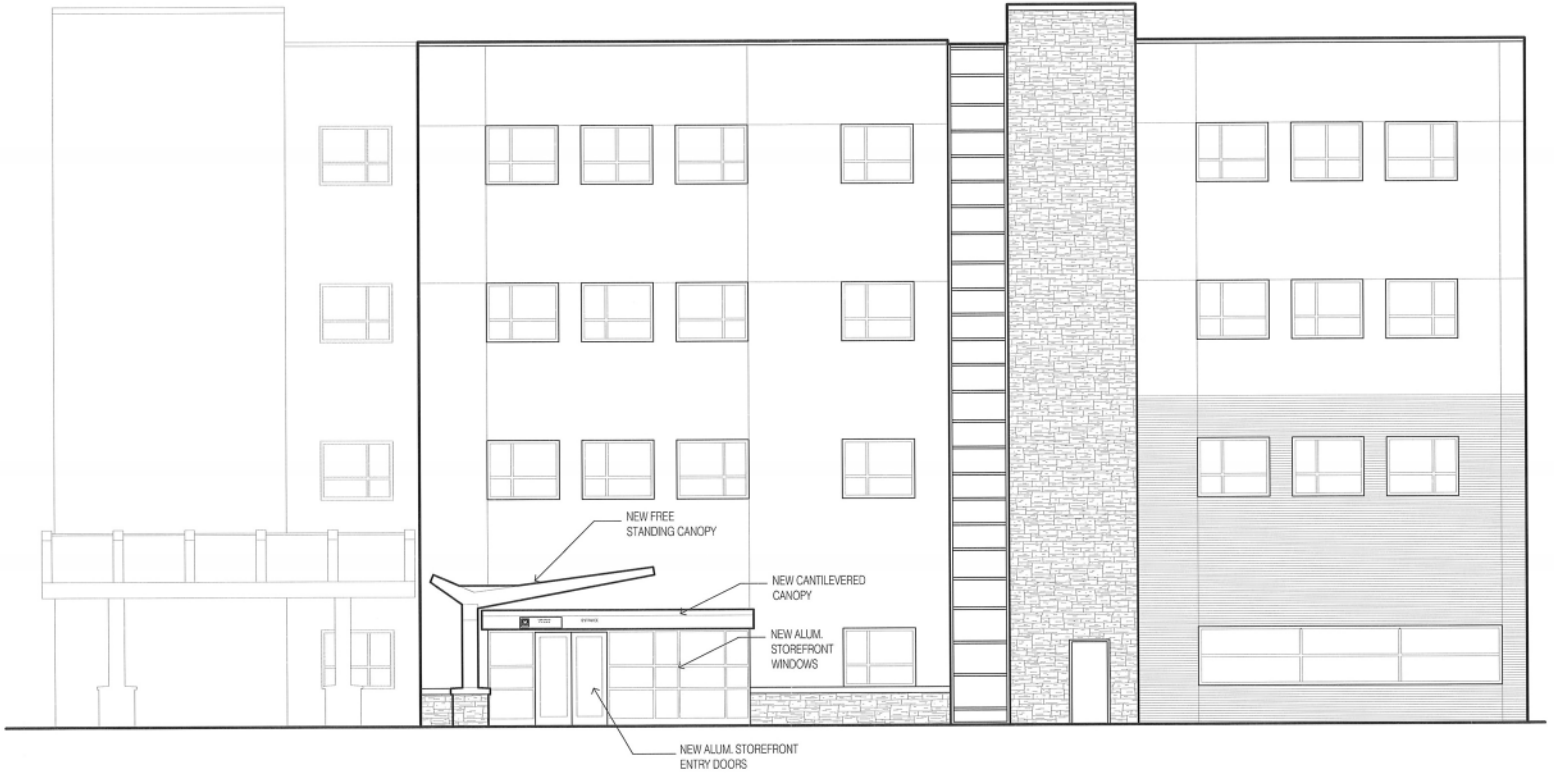


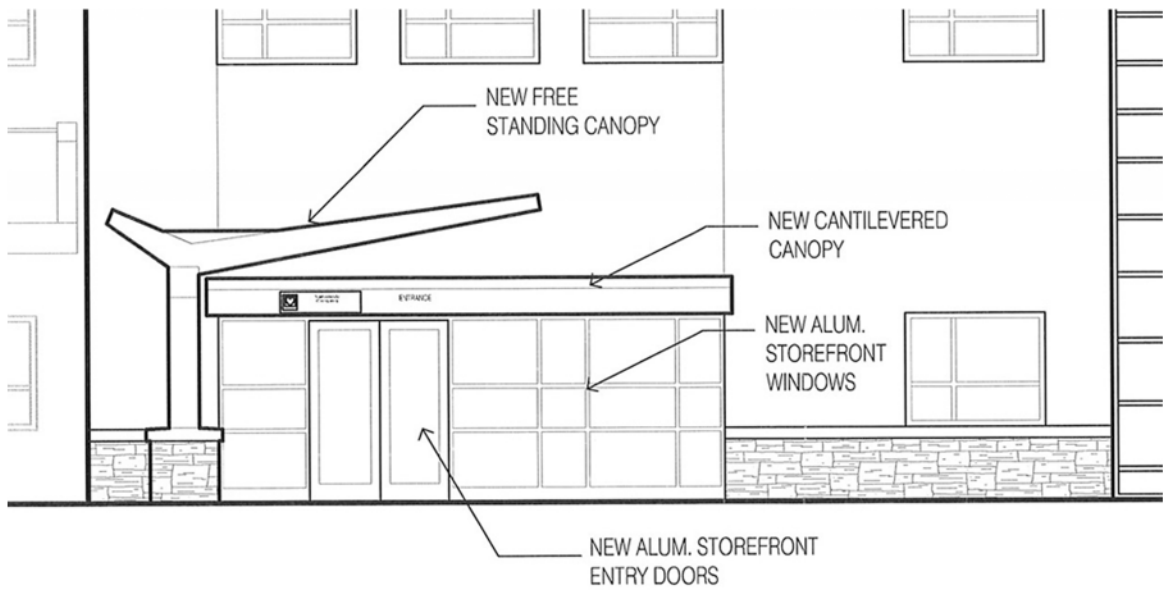
# SITE PLAN



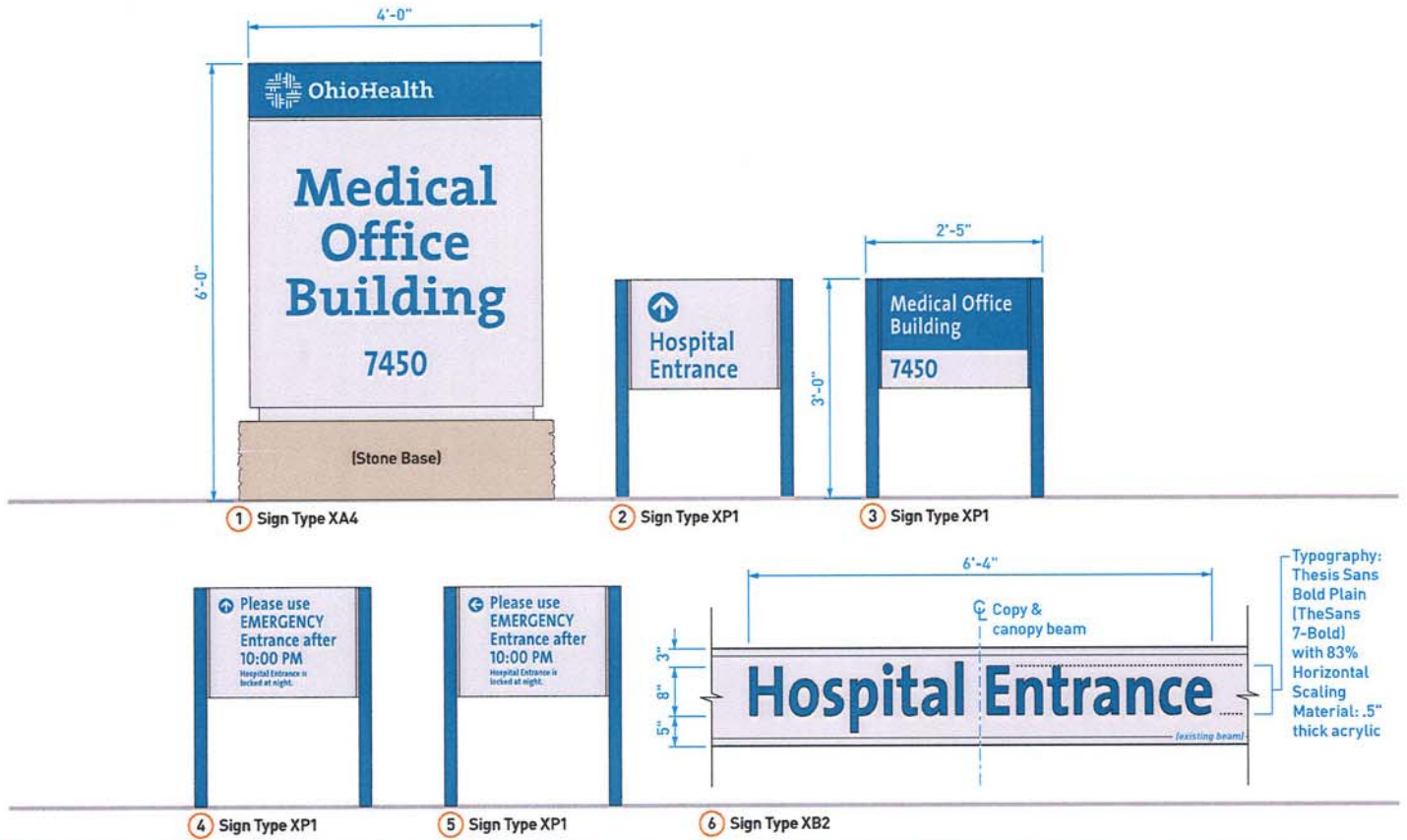
# PROPOSED CANOPY



**East Elevation**



# PROPOSED SIGNS

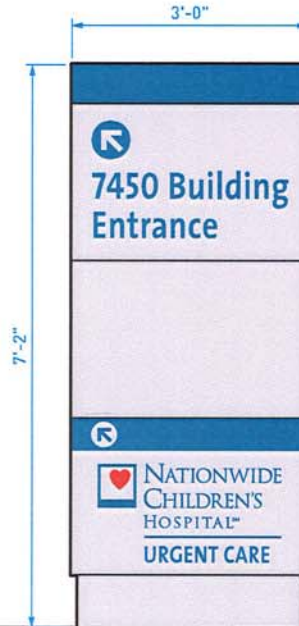


# PROPOSED SIGNS

Existing sign type XD1 with  
Nationwide Children's  
Urgent Care added.



Existing sign type XD2  
with Nationwide Children's  
Urgent Care added.

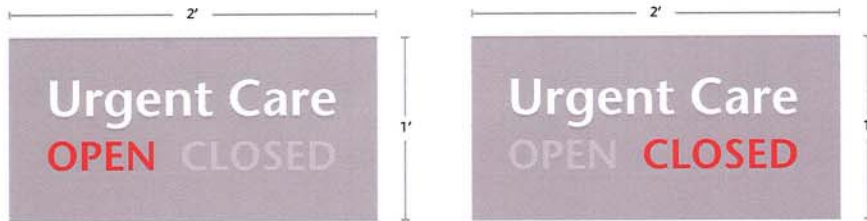


# PROPOSED SIGNS

1



2



Cabinet sign with a brush metal face and sides. "Urgent Care" continually backlit with routed out letters in milk white acrylic. "Open" and "Closed" in routed out letters, in milk white acrylic, controlled by a switch to back light as needed in red.

3

