

Prepared By:
City of Dublin
Land Use & Long Range Planning
 5800 Shier-Rings Road
 Dublin, Ohio 43016
 614-410-4600

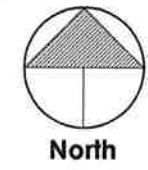
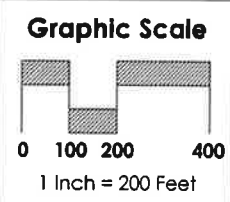


CITY OF DUBLIN

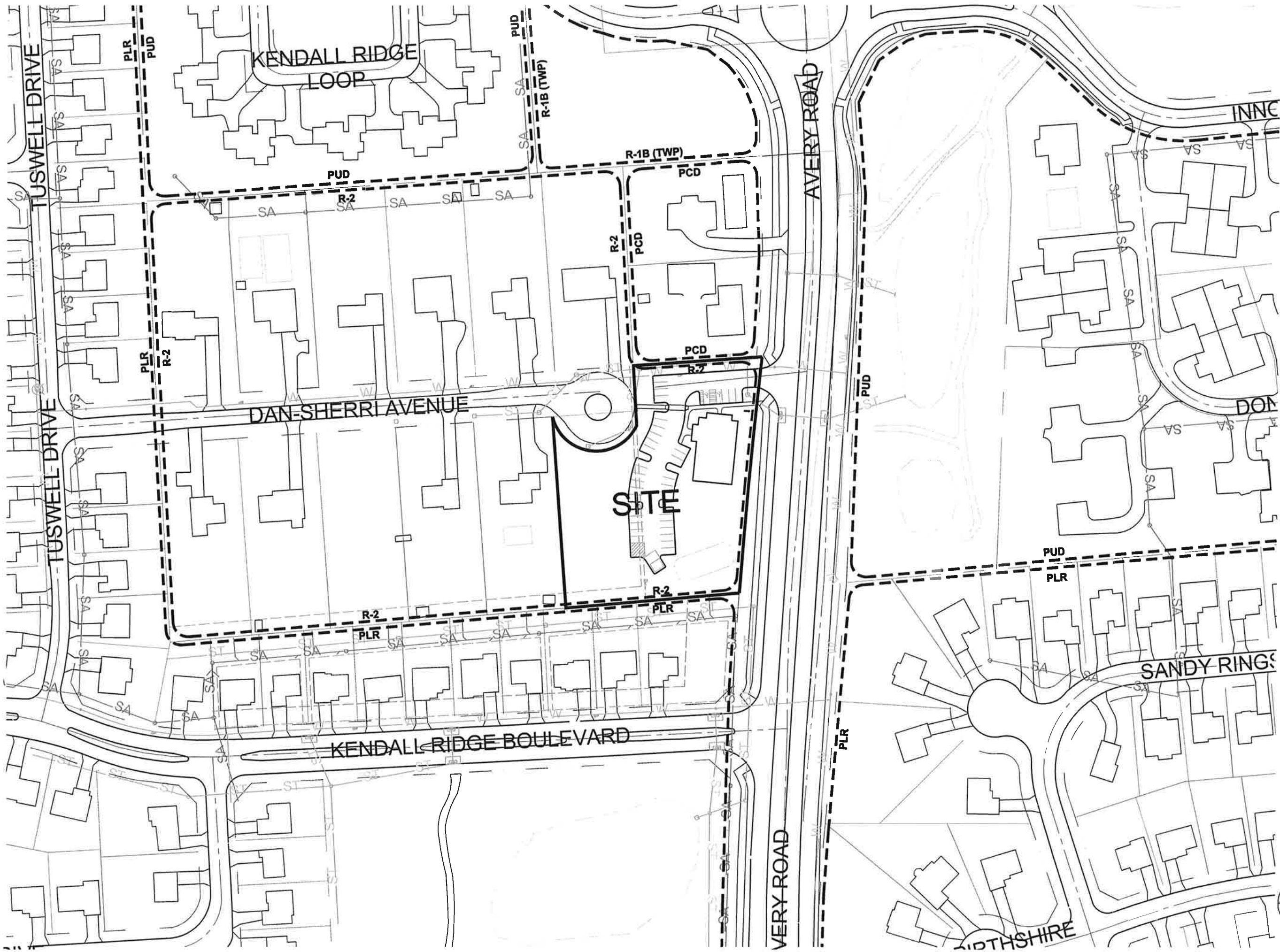
6001, 6009 Avery Road
 City of Dublin-Franklin County-Ohio
Preliminary Development Plan

Date: 7/02/10
Revisions


Date	Initial



Regional Context
Sheet 1 of 6



Prepared By:
City of Dublin
Land Use & Long Range Planning
 5800 Shier-Rings Road
 Dublin, Ohio 43016
 614-410-4600



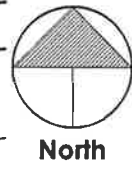
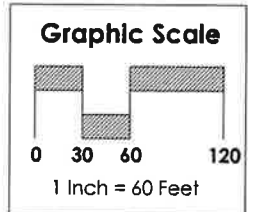
CITY OF DUBLIN

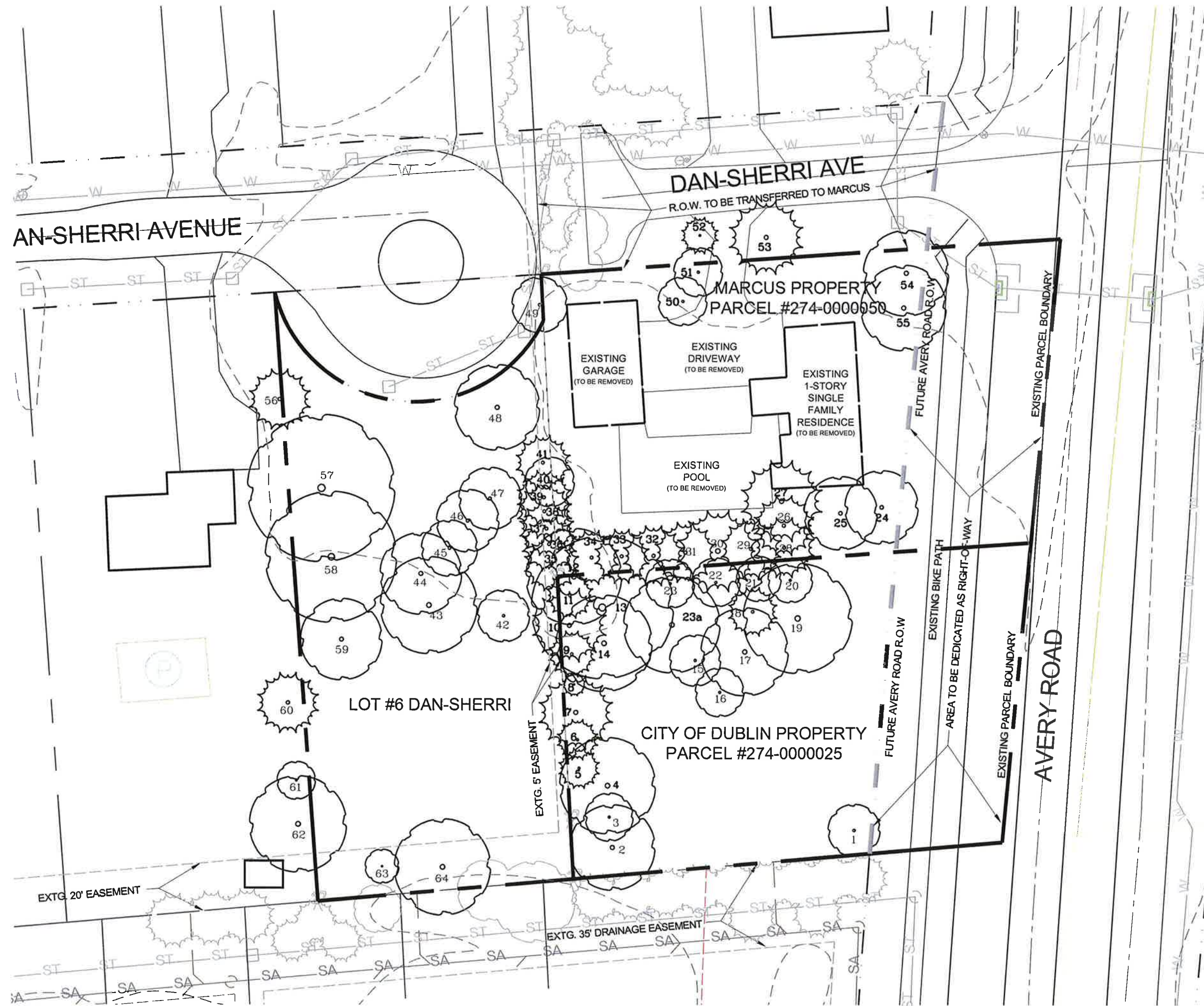
6001, 6009 Avery Road
 City of Dublin-Franklin County-Ohio
Preliminary Development Plan

Date: 7/02/10

Revisions

Date	Initial





Prepared By:
City of Dublin
Land Use & Long Range Planning
 5800 Shier-Rings Road
 Dublin, Ohio 43016
 614-410-4600



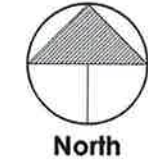
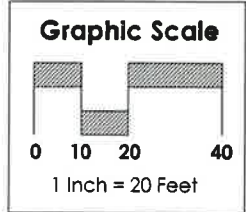
CITY OF DUBLIN

6001, 6009 Avery Road
 City of Dublin-Franklin County--Ohio
Preliminary Development Plan

Date: 7/02/10

Revisions

Date	Initial



Existing Conditions
Sheet 3 of 6